



  
**Stockholm**  
*The Capital of Scandinavia*

  
**Stockholm**  
*The Capital of Scandinavia*

# Stockholm Economy

Q2 2012

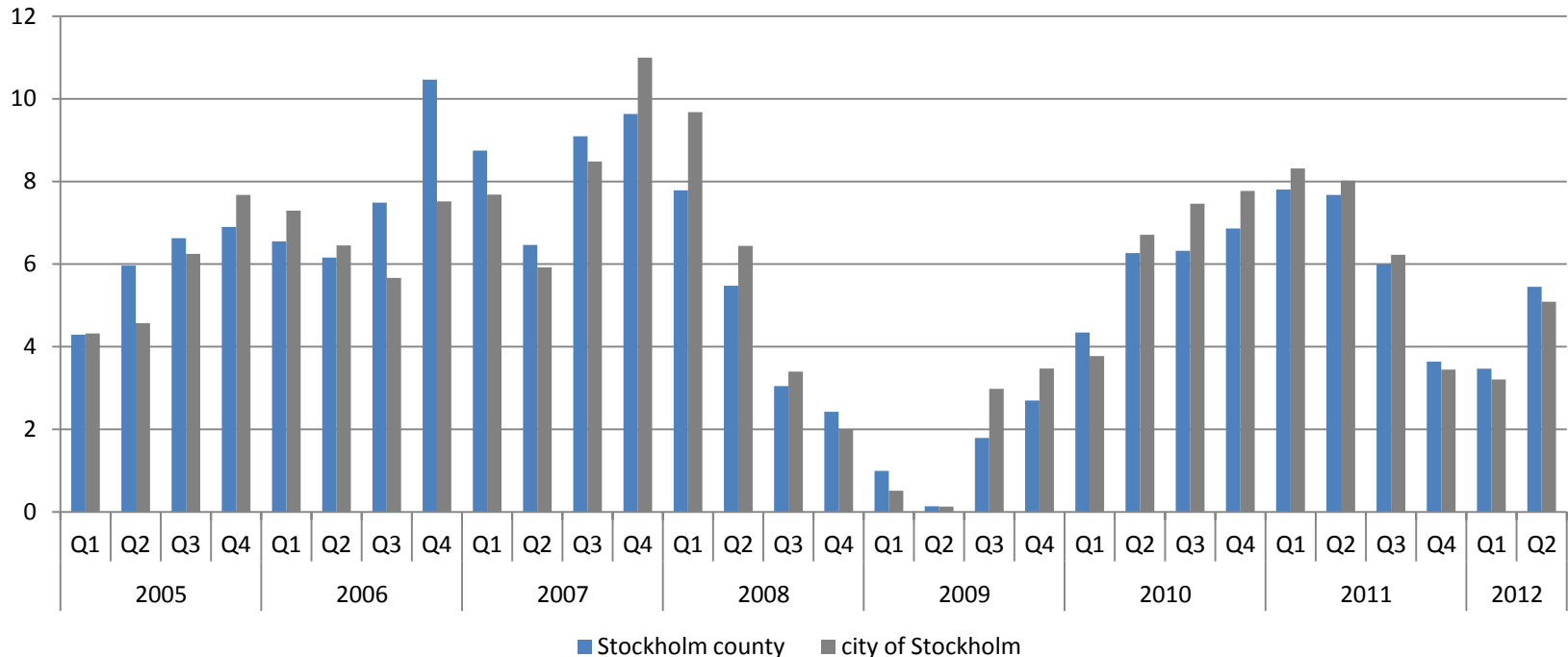


**Stockholm**  
Business Region  
Development



# Economic growth, private sector

Gross pay, change (%) from the previous quarter, seasonally adjusted and trend-adjusted, annual rate

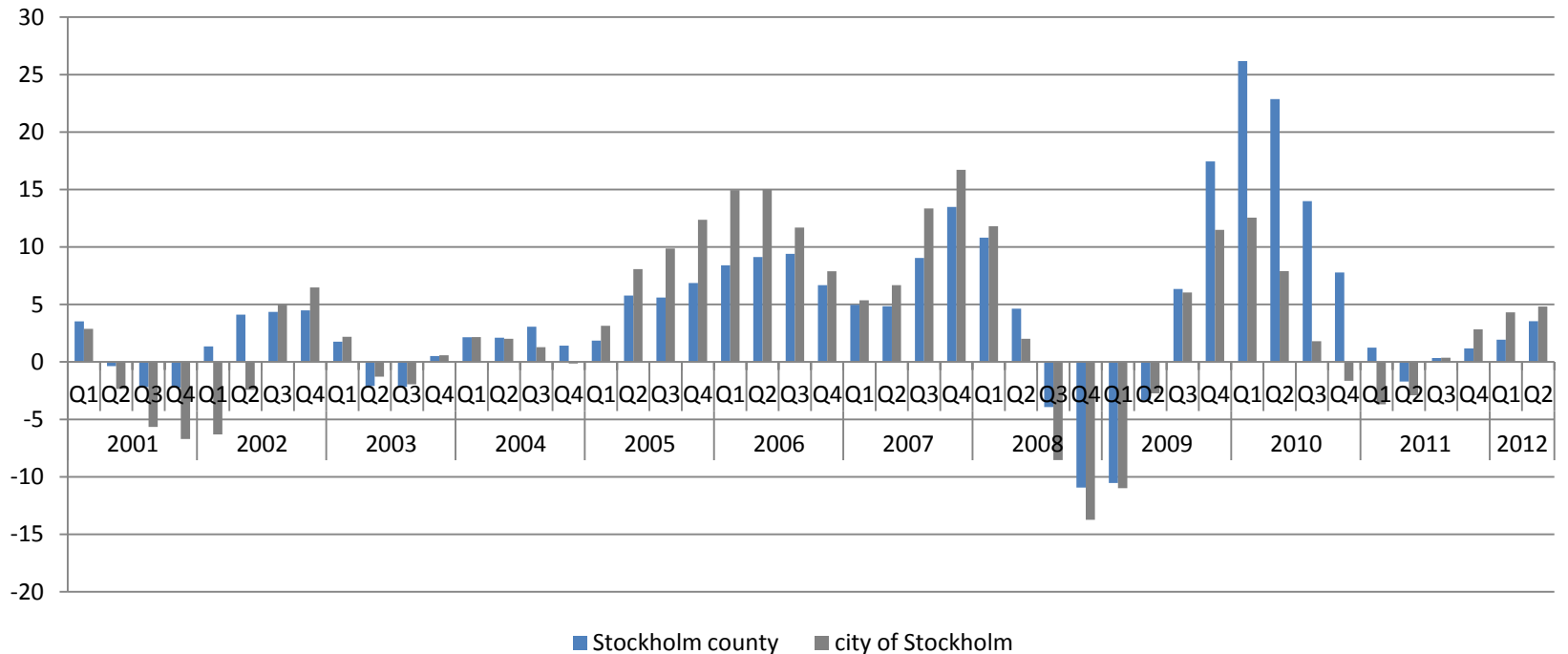


Source: Statistics Sweden



# Sales in private sector

Change (%) from the previous quarter, seasonally adjusted and trend-adjusted, annual rate

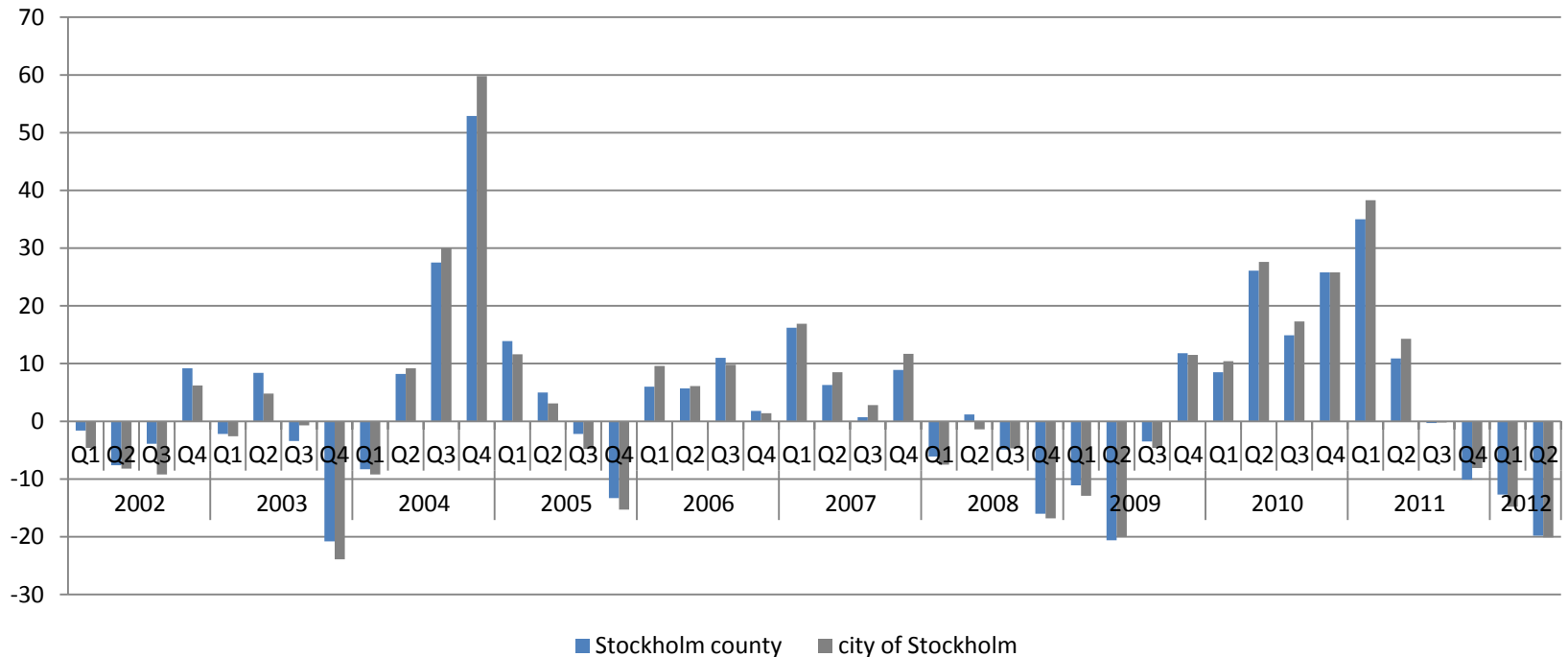


Source: Statistics Sweden



# Number of business start-ups

Percent change same quarter, previous year

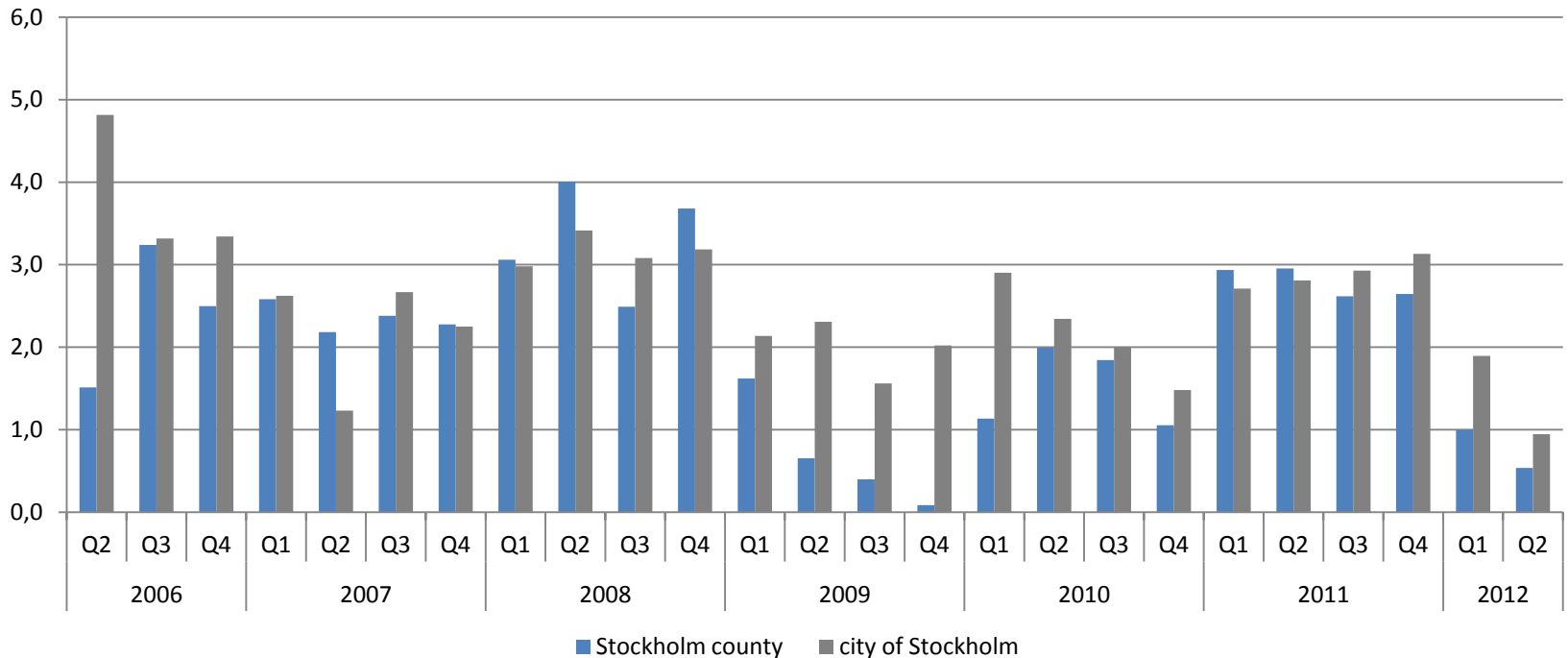


Source: The Swedish Companies Registration Office



# Employment

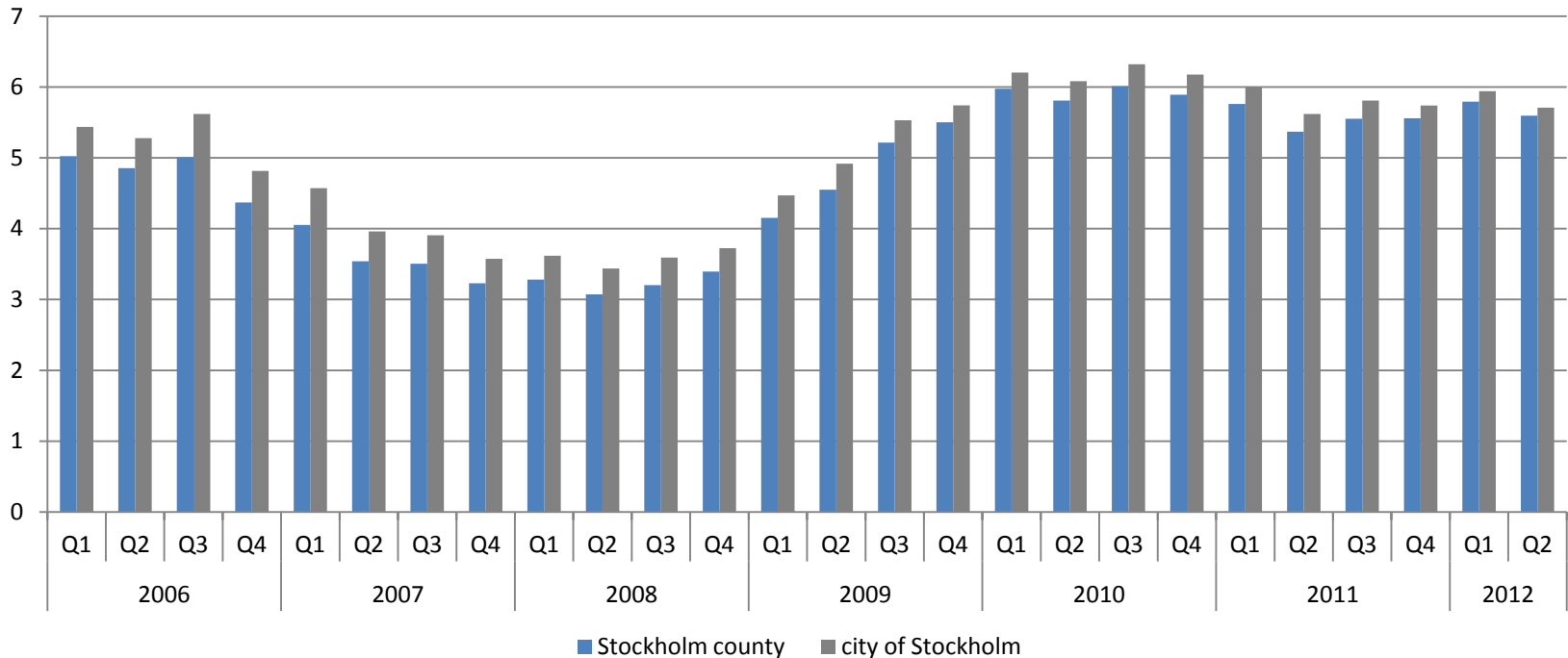
Percent change same quarter, previous year



Source: Statistics Sweden



# Unemployed in relation to the workforce (%)

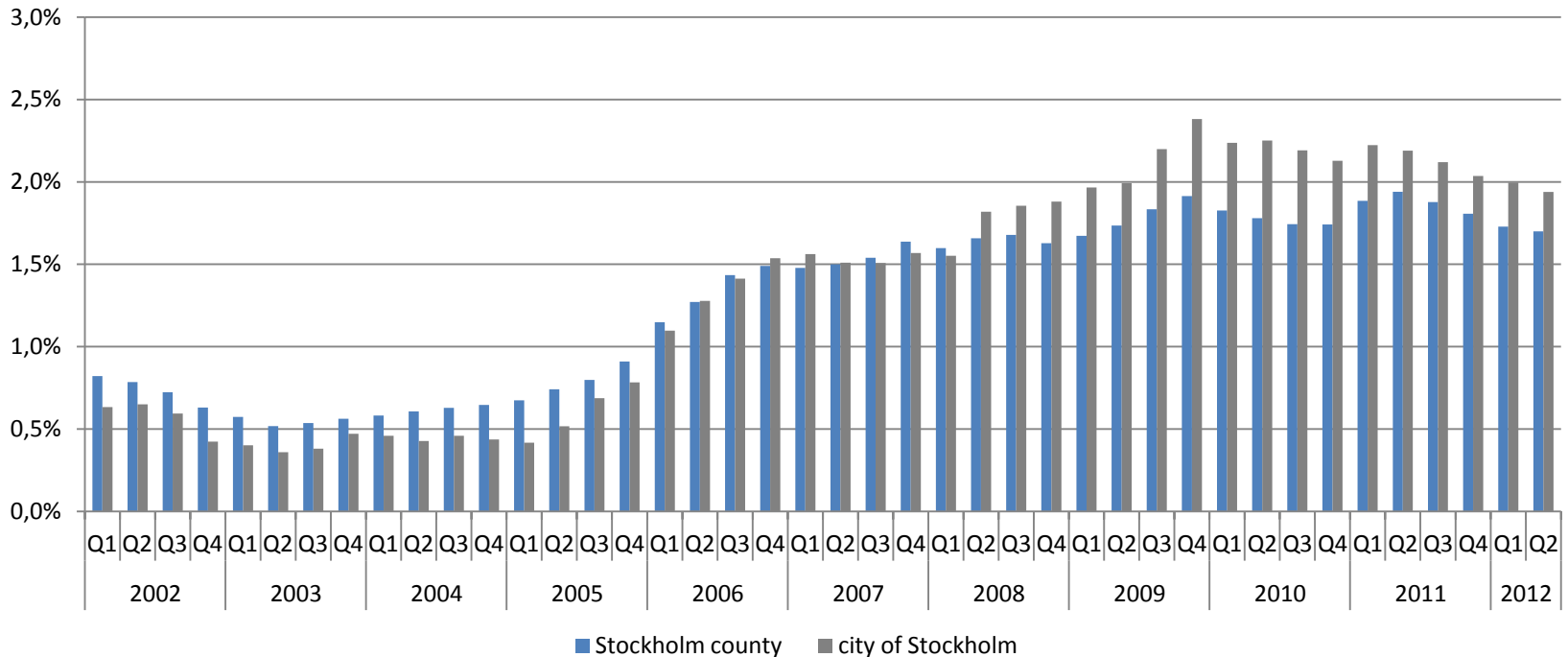


Source: Statistics Sweden and The Swedish Public Employment Service



# Population

Percent change same quarter, previous year



Source: Statistics Sweden