

# 2017 Global Risk Management Survey

## A guide to using the interactive tool

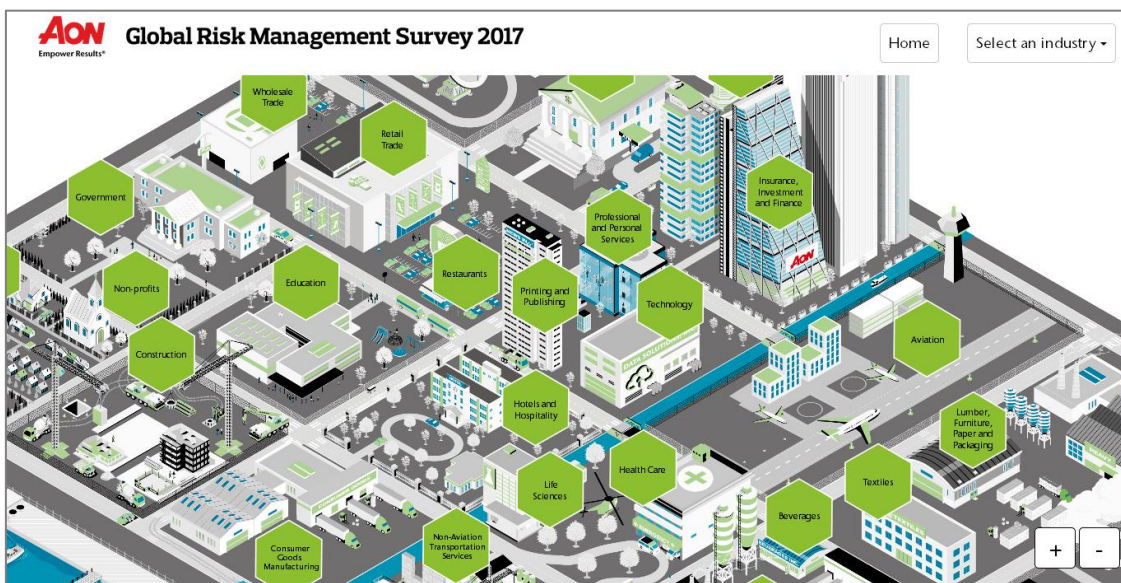
Visit the website: [aon.com/2017GlobalRisk](http://aon.com/2017GlobalRisk) and click on the interactive tool:



On the page, an introductory video will play. This short video introduces the 2017 Global Risk Management Survey and discusses key statistics around the report.

If you do not wish to watch this video, it can be skipped by clicking 'Skip Video' on the bottom right hand corner of the screen.

Afterwards, you will be introduced to 'Risk City':



This fully interactive city contains all 33 industries which feature in the Global Risk Management Survey.

To select an industry, you have two options:

1. **Find the industry name in the hexagon on the map.** Each building on the map represents each industry and will have an accompanying hexagon. Click (or touch if using a touchscreen device) on the hexagon to progress.
2. **Use the 'select an industry' option.** This is located on the top right hand corner of the screen, and by selecting an industry from the drop-down box, you can progress to the next step.

To move around the map

On a computer:

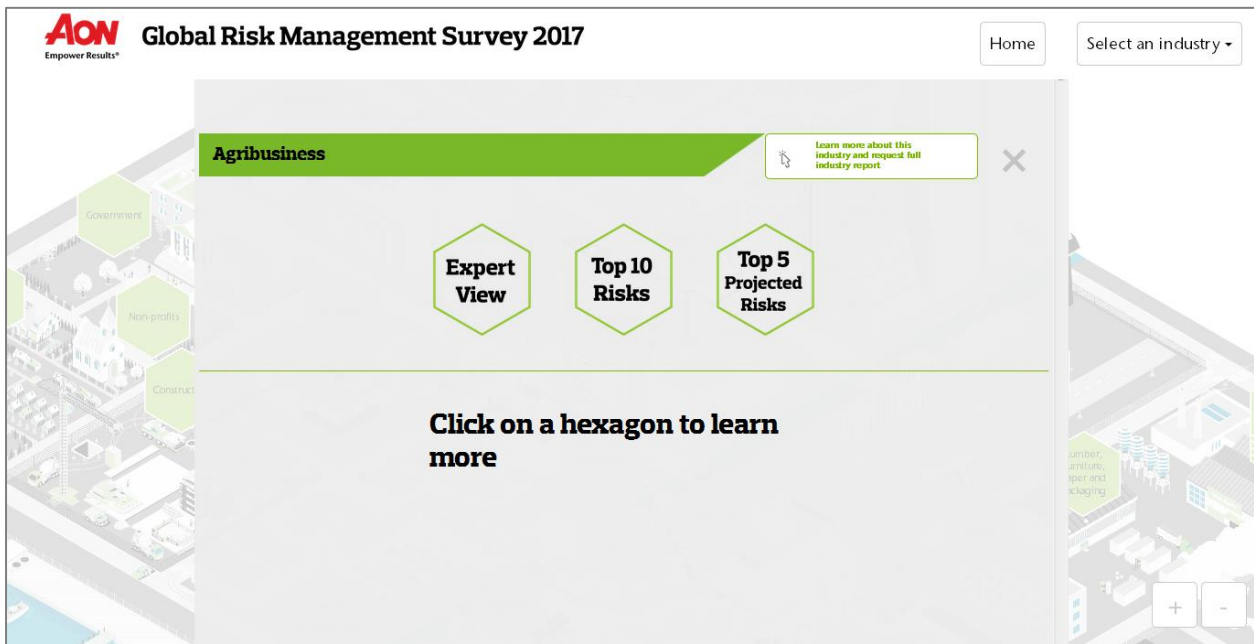
- You can zoom in using either the buttons on the bottom right hand corner of the screen, or by using the wheel on your mouse.
- After zooming, you can pan around by clicking and dragging the mouse cursor.

On a tablet / iPad:

- As with other applications, you can use the 'pinch' feature to zoom in and out of the map. You can also use the zoom buttons on the bottom right corner.
- You can then pan around the city by touching and dragging in the desired direction.

Industry Dashboard

Once you've selected an industry, you will be presented with that industries specific dashboard:



*Please note that you can leave the dashboard and return to the industry city at any time by clicking on the 'x' in the top right hand corner, or selecting home.*

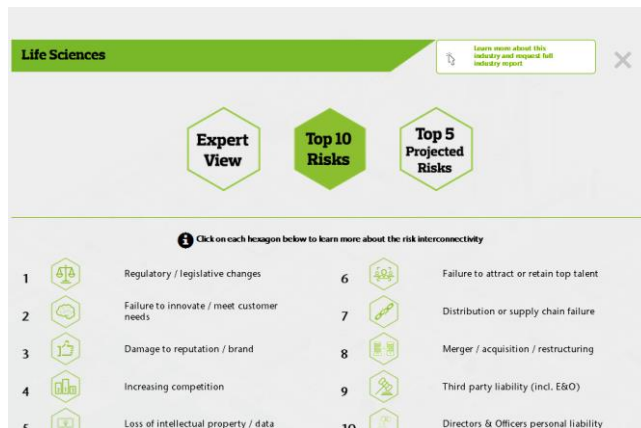
You can also navigate straight to another industry dashboard by using the ‘Select an Industry’ option on the top right hand corner.

In each dashboard, you have three sets of data to explore for that industry:

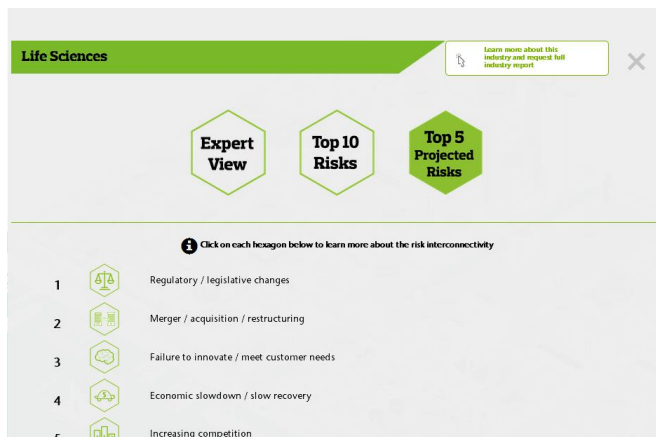
1. **Expert View:** This contains three pieces of commentary, written by the Aon leader of the selected industry, which is intended to provide further insights into the results



2. **Top 10 Risks:** The top 10 risks specific to the selected industry



3. **Top 5 Projected Risks:** These are the top 5 projected risks in 2020 for the selected industry



### Risk Interconnectivity

By selecting either **Top 10 Risks** or **Top 5 Projected Risks** for an industry, you are presented with a list of risks.

By selecting any of the risk hexagons, you will be presented with the risk interconnectivity view:



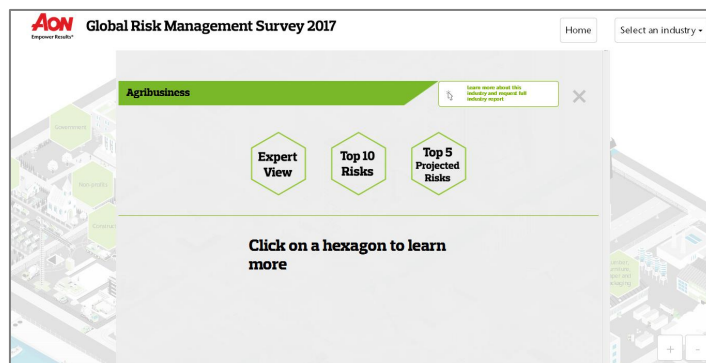
In this window, you have two ways to view risk interconnectivity:

- 1. Leads to Risk:** This displays interconnected risks (Green outlined hexagon) which can lead to the selected risk (Green filled hexagon). This is the default display when you select a risk.
- 2. Result of Risk:** This displays the interconnected risks (Green outlined hexagon) may be a result of the selected risk (Green filled hexagon). This can be viewed by clicking on the 'Result of Risk' option in the top left hand corner of the box.

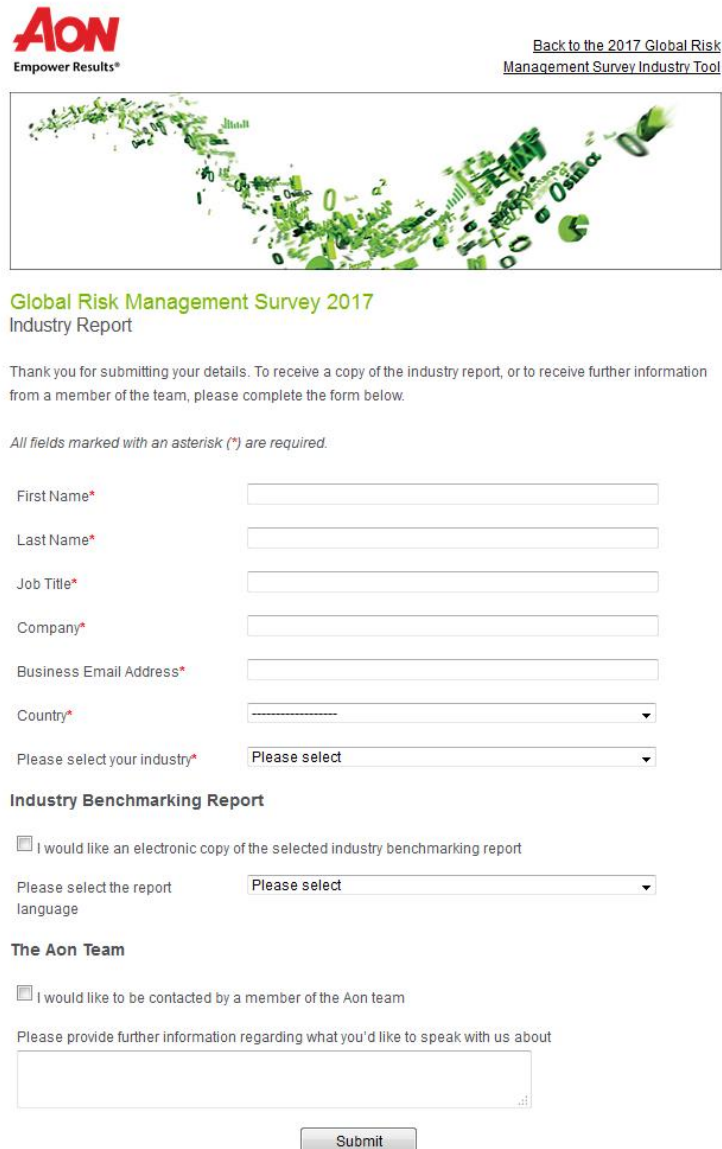
*To leave this view, you need to select the 'x' in the top right hand corner of the screen.*

### Call to Action

This can be found in the top right hand corner of every industry dashboard page and will remain there regardless of whether you have selected **Expert View**, **Top 10 risks** or **Top 5 Projected Risks**.



Once selected, a new website window will open which contains a form.



The screenshot shows the Aon logo and 'Empower Results' tagline in the top left. In the top right, there is a link: 'Back to the 2017 Global Risk Management Survey Industry Tool'. Below this is a decorative graphic of a world map composed of green leaves and icons. The main heading is 'Global Risk Management Survey 2017 Industry Report'. A thank-you message follows: 'Thank you for submitting your details. To receive a copy of the industry report, or to receive further information from a member of the team, please complete the form below.' A note states: 'All fields marked with an asterisk (\*) are required.' The form includes the following fields: 'First Name\*', 'Last Name\*', 'Job Title\*', 'Company\*', 'Business Email Address\*', 'Country\*' (a dropdown menu), and 'Please select your industry\*' (a dropdown menu). Below these is the 'Industry Benchmarking Report' section with a checkbox 'I would like an electronic copy of the selected industry benchmarking report' and a dropdown menu 'Please select the report language'. The 'The Aon Team' section has a checkbox 'I would like to be contacted by a member of the Aon team' and a text area 'Please provide further information regarding what you'd like to speak with us about'. A 'Submit' button is at the bottom.

Once complete, you are then asked if you would like the following information around your industry:

1. **An electronic copy of the industry report, along with 11 language options.** This will be sent from an Aon representative within 5 working days.
2. **To be contacted by an Aon representative who specialises in that industry.**

Once submitted, notifications are sent to regional Chief Commercial Officers, who will then notify the applicable Aon team.